



CITGO Railroad Curve Grease

OVERVIEW



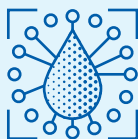
- Available as Summer Railroad Curve Grease No. 1 and Winter Railroad Curve Grease No. 0.
- Anhydrous calcium thickened greases formulated with graphite provide outstanding wear resistance.

FEATURES & BENEFITS



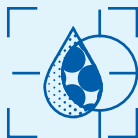
- Smooth, buttery texture provides exceptional spray characteristics.
- Spray consistently through the applicator nozzle to coat the rail sides.
- Graphite provides outstanding wear protection.
- Anhydrous calcium thickener is extremely resistant to water, adhering to the rail, even in humid and rainy environments.

APPLICATIONS



- Summer Railroad Curve Grease No. 1 stays in place in harsh summer weather.
- Winter Railroad Curve Grease No. 0 provides improved flow during colder winter conditions.
- Both provide outstanding rail curve wear protection.
- Refer to equipment owner's manual for proper lubricant recommendation.

PROPERTIES



Typical Properties for CITGO Railroad Curve Grease:

	SUMMER RAILROAD CURVE GREASE NO. 1	WINTER RAILROAD CURVE GREASE NO. 0
Material Code	655532001	655531001
NLGI Grade	1	0
Thickener Type	Anhydrous Calcium	Anhydrous Calcium
Color	Gray	Gray
Texture	Smooth, Buttery	Smooth, Buttery
Worked Penetration, ASTM D217	310-340	355-385
Solid Additives	Graphite	Graphite
Base Oil Viscosity @ 40°C, cSt	20	20

CITGO is a registered trademark of CITGO Petroleum Corporation. All other registered trademarks or trademarks are the property of their respective owners. Values shown are typical values only and do not constitute a specification. The information contained herein is subject to change without notice.