



CITGO[®] Lithoplex[®] CM & HM Greases

OVERVIEW



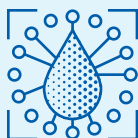
- These premium quality lithium complex greases provide outstanding protection in construction and mining applications.
- Contain molybdenum disulfide for additional protection in harsh environments.

FEATURES & BENEFITS



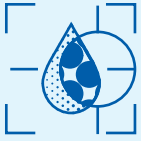
- Extreme pressure (EP) and anti-wear additives provide excellent equipment protection.
- Lithoplex CM contains 3% molybdenum disulfide (moly) and Lithoplex HM contains 5% molybdenum disulfide to provide additional protection in harsh environments.
- Formulated with corrosion inhibitors to extend equipment life.
- Contain oxidation inhibitors to extend the grease life and protect the application for longer periods.
- Polymeric additive improves water resistance and adhesion.

APPLICATIONS



- Recommended for construction equipment, mining equipment, fifth wheels, bucket pins, crusher bearings, pin and bushings, pivot pins, track drive rollers, and industrial applications.
- Lithoplex CM contains 3% moly and Lithoplex HM contains 5% moly to meet equipment manufacturer requirements.
- Refer to equipment owner's manual for proper lubricant recommendation.

PROPERTIES



Typical Properties for CITGO Lithoplex CM & HM Greases:

Product	Lithoplex CM1	Lithoplex CM2	Lithoplex HM1	Lithoplex HM2
Material Code	655351001	655352001	655356001	655357001
NLGI Grade	1	2	1	2
Thickener Type	Lithium Complex	Lithium Complex	Lithium Complex	Lithium Complex
Color	Gray	Gray	Gray	Gray
Texture	Smooth, Adhesive	Smooth, Adhesive	Smooth, Adhesive	Smooth, Adhesive
Worked Penetration, ASTM D217	310-340	265-295	310-340	265-295
Dropping Point, ASTM D2265, °F(°C)	500 (260)	500 (260)	500 (260)	500 (260)
Rust Prevention, ASTM D1743, Rating	Pass	Pass	Pass	Pass
Water Washout, ASTM D1264, % Loss @ 175°F	2.0	2.0	2.5	2.0
Molybdenum Disulfide, Wt. %	3	3	5	5
Four-Ball Wear, ASTM D2266, mm	0.45	0.45	0.40	0.40
Four-Ball Weld, ASTM D2596, kgf	400	400	500	500
Four-Ball Load Wear Index, ASTM D2596, kgf	64	64	64	64
Base Oil Viscosity @ 40°C, cSt (incl. oil soluble additives)	285	375	375	375

CITGO and Lithoplex are registered trademarks of CITGO Petroleum Corporation. All other registered trademarks or trademarks are the property of their respective owners. Values shown are typical values only and do not constitute a specification. The information contained herein is subject to change without notice.