



CITGO® Lithoplex® PM Grease

OVERVIEW



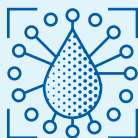
- Designed to provide outstanding performance in industrial applications.
- Provides excellent protection in severe applications of plain and rolling bearings that operate in mild to high temperatures.

FEATURES & BENEFITS



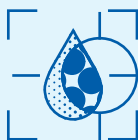
- This product provides excellent protection in applications where high loads exist.
- Provides superior protection in applications where metal-to-metal friction exists.
- Polymer-fortified for improved adhesion and resistance to water.
- Corrosion inhibitor protects equipment.

APPLICATIONS



- Recommended for industrial applications where outstanding wear protection, water resistance, corrosion resistance, and EP protection are required.
- This product provides excellent protection in severe applications of plain and rolling bearings that operate in mild to high temperatures.
- Recommended for rolling element bearings in pellet mills.
- Refer to equipment owner's manual for proper lubricant recommendation.

PROPERTIES



Typical Properties for CITGO Lithoplex PM Grease:

Material Code	655437001
NLGI Grade	2
Thickener Type	Lithium Complex
Color	Red
Texture	Smooth, Adhesive
Worked Penetration, ASTM D217	265-295
Dropping Point, ASTM D2265, °F(°C)	500 (260)
Rust Prevention, ASTM D1743, Rating	Pass
Water Washout, ASTM D1264, % loss @ 175°F	2.5
Four-Ball Wear, ASTM D2266, mm	0.48
Timken OK Load, ASTM D2509, lbs	80
Base Oil Viscosity @ 40°C, cSt	155

CITGO and Lithoplex are registered trademarks of CITGO Petroleum Corporation. All other registered trademarks or trademarks are the property of their respective owners. Values shown are typical values only and do not constitute a specification. The information contained herein is subject to change without notice.