



# CITGO® Lithoplex® RT Greases

## OVERVIEW



- Premium-quality lithium complex greases suited for a wide variety of industrial and automotive service applications including chassis and wheel bearings.
- These extreme pressure greases are recommended for use across multiple industries, including on-road, off-road, and industrial applications.

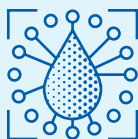
## FEATURES & BENEFITS



- Extremely stable lithium complex formula retains its consistency even in the most severe service.
- Additives provide excellent extreme pressure and anti-wear protection under severe conditions.
- Resist corrosion, thereby extending equipment life -- of particular importance in applications where moisture is present.
- Oxidation inhibitors extend grease life and protect the application for longer periods.
- Their red color and tacky, moly-free formula make them ideal for many problem applications.
- Lithoplex RT 1 and RT 2 greases meet the ASTM D4950 requirements for Wheel Bearing Category GC and Chassis Lubrication Category LB.



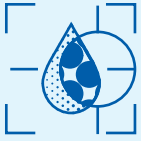
## APPLICATIONS



- Provide excellent performance in applications where good adhesion and water resistance are critical.
- Excellent for use in many industrial, agricultural, and automotive applications.

**Approvals:** Mack MG-C

- Refer to equipment owner's manual for proper lubricant recommendation.

**PROPERTIES****Typical Properties for CITGO Lithoplex RT Greases:**

<b>Material Code</b>	<b>655343001</b>	<b>655344001</b>
NLGI Grade	1	2
Thickener Type	Lithium Complex	Lithium Complex
Color	Red	Red
Texture	Smooth, Adhesive, Buttery	Smooth, Adhesive, Buttery
Worked Penetration, ASTM D217	310-340	265-295
Dropping Point, ASTM D2265, °F(°C)	500 (260)	530 (277)
Rust Prevention, ASTM D1743, Rating	Pass	Pass
Water Washout, ASTM D1264, % Loss @ 175°F	5.3	2.0
Four-Ball Wear, ASTM D2266, mm	0.42	0.42
Four-Ball Weld, ASTM D2596, kgf	250	250
Four-Ball Load Wear Index, ASTM D2596, kgf	48	48
Base Oil Viscosity @ 40°C, cSt (including oil soluble additives)	500	500
NLGI Classification, ASTM D4950	GC-LB	GC-LB

CITGO and Lithoplex are registered trademarks of CITGO Petroleum Corporation. All other registered trademarks or trademarks are the property of their respective owners. Values shown are typical values only and do not constitute a specification. The information contained herein is subject to change without notice.