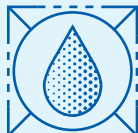




CITGO® KOOLBLADE® Saw Guide Oils

OVERVIEW



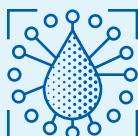
- Premium saw guide lubricants designed for the lubrication of arbor bearings and saw guide systems which utilize thin kerf technology in cutting lumber.
- Formulated with select additives to provide wear protection, tackiness, enhanced metal-wetting ability and protection against rust and corrosion.

FEATURES & BENEFITS



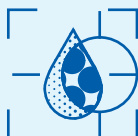
- Reduces friction between the saw and guide components.
- Good metal-wetting ability.
- Emulsifies in the presence of water.
- Contains tackiness agents to resist sling-off.
- Excellent anti-wear properties for protection of moving parts.
- Protects against rust and corrosion.

APPLICATIONS



- Designed to be used in saw guides and blades, arbor bearings, saw system ways, and gears from manufacturers such as Salem, Coe Newnes/McGhee, and USNR (Schurman, Ukiah).

PROPERTIES



Typical Properties for CITGO KOOLBLADE Saw Guide Oils:

ISO Grade	100	150
Material Code	638155001	638156001
Gravity, ASTM D4052, °API	30.5	29.5
Density, lbs/gallon	7.36	7.39
Flash Point, COC, ASTM D92, °C (°F)	240 (464)	254 (489)
Viscosity ASTM D445		
cSt at 40°C	100	150
cSt at 100°C	12.0	15.0
Viscosity Index, ASTM D2270	110	100
Pour Point, ASTM D97, °C (°F)	-30 (-22)	-24 (-11)
Color, ASTM D1500	L3.5	L3.5

CITGO and KOOLBLADE are registered trademarks of CITGO Petroleum Corporation. All other registered trademarks or trademarks are the property of their respective owners. Values shown are typical values only and do not constitute a specification. The information contained herein is subject to change without notice.