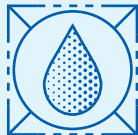




# CITGO® Chain Oils

## OVERVIEW



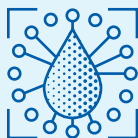
- Chain lubricants with enhanced metal adhesion, designed for use in industrial and forestry applications to reduce wear and protect against rust.

## FEATURES & BENEFITS



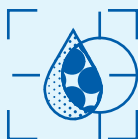
- Reduce friction and wear.
- Excellent protection against rust and corrosion.
- Adhesive film repels moisture and resists sling-off.
- Penetrate quickly to lubricate moving parts.

## APPLICATIONS



- Industrial chains used in forestry and other industries.
- Roller pins and sprockets.
- Refer to equipment owner's manual for proper lubricant recommendation and warranty requirements.

## PROPERTIES



### Typical Properties for CITGO Chain Oil:

ISO Grade	46	150
Material Code	638120	638123
Gravity, ASTM D4052, °API	33.8	29.8
Density, lb/gal at 60°F	7.13	7.31
Flash Point, COC, ASTM D92, °F (°C)	446 (230)	500 (260)
Viscosity ASTM D445		
cSt at 40°C	45.1	150
cSt at 100°C	7.4	16
Viscosity Index, ASTM D2270	129	107
Pour Point ASTM D97, °F (°C)	-27 (-33)	-22 (-30)
Color	L1.5	L1.5

CITGO is a registered trademark of CITGO Petroleum Corporation. All other registered trademarks or trademarks are the property of their respective owners. Values shown are typical values only and do not constitute a specification. The information contained herein is subject to change without notice.